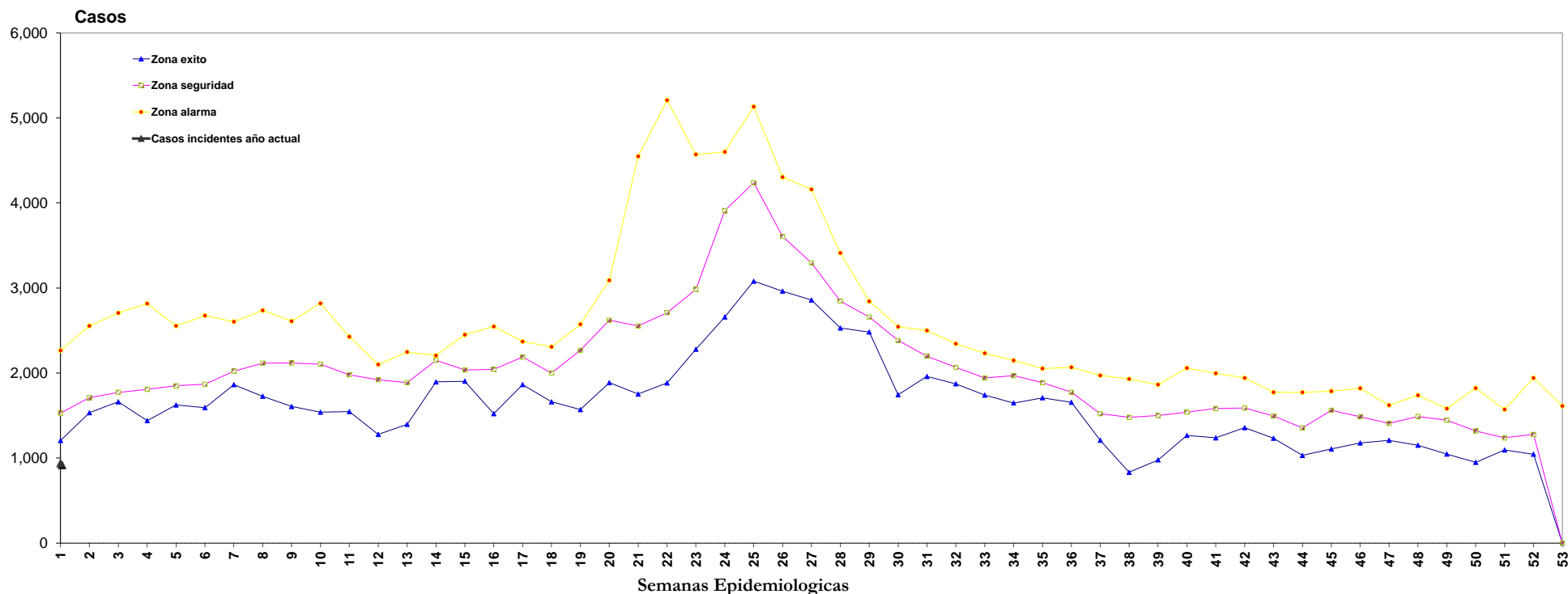


Semanas Epidemiológicas

SEMANAS EPIDEMIOLÓGICAS																																																															
AÑOS	1	2	3	4	5	6	7	8	9	10	11	12	13	14	15	16	17	18	19	20	21	22	23	24	25	26	27	28	29	30	31	32	33	34	35	36	37	38	39	40	41	42	43	44	45	46	47	48	49	50	51	52	53	TOTAL									
2013	1,355	1,610	1,773	1,800	1,733	1,868	2,058	2,116	2,209	2,206	2093	1799	1479	1993	1996	2044	1864	1661	1569	1886	1752	1883	2280	2887	3080	2963	2958	2628	2581	2383	2327	2048	1987	1970	1727	1768	1565	1403	1500	1450	1,582	1,536	1,447	1,355	1,335	1,177	1,208	1,150	1,264	1,300	1,195	1,101	0	95,902									
2014	1,206	1,620	1,661	1,808	1,850	1,893	1,993	1,738	1,743	1,933	1809	1761	1888	2152	1904	1521	1915	1840	2039	2343	2432	2486	2875	3909	5134	4114	4161	3413	2843	2494	2228	2016	2031	1869	1709	1774	1611	1415	1500	1540	1,687	1,589	1,894	1,406	1,588	1,486	1,408	1,514	1,515	1,781	1,571	1,394	1,612	108,411									
2015	2,266	2,555	2,707	2,348	2,233	2,501	2,560	2,132	2,438	2,158	1980	2079	1396	2111	2363	2372	1974	2109	2306	2621	2731	2997	4378	4602	4239	3698	3204	2848	2706	2403	2500	2345	2233	2013	2053	1762	1458	1765	1556	1909	1,996	1,942	1,568	1,773	1,786	1,821	1,622	1,661	1,544	1,318	1,278	1,302	0	102,111									
2016	1,527	1,533	1,688	1,440	1,624	1,593	2,014	1,727	1,606	1,539	1547	1277	1861	2181	2451	2547	2188	2309	2379	2679	2772	2711	2561	2659	3154	3290	3228	2712	2556	1744	2199	1873	1740	1781	1927	1856	1522	1807	1626	1673	1,574	1,611	1,495	1,317	1,474	1,547	1,550	1,738	1,582	1,822	1,360	1,942	0	102,111									
2017	1,990	2,098	2,329	2,817	2,555	2,676	2,604	2,737	2,610	2,820	2427	2101	2248	2150	1927	2405	2307	2265	2574	2685	2553	2729	3228	4266	5064	4193	3626	3060	2658	2327	1959	2066	1829	2148	1900	2000	1209	832	978	1266	1,237	1,357	1,233	1,030	1,106	1,379	1,209	1,271	1,282	1,126	1,094	1,095	0	112,615									
2018	1,590	1,743	1,691	1,777	1,627	1,822	1,863	1,925	2,119	2,119	2,104	1967	1921	1893	1895	2036	2041	2371	1972	2250	3090	4549	5209	5452	3468	3276	3084	2889	2529	2482	2328	2182	2117	1941	2023	1887	2068	1942	1930	1864	2059	1,985	1,730	1,774	1,388	1,682	1,517	1,431	1,488	1,446	1,465	1,243	1,277	0	112,311								
2019	1,332	1,710	1,913	1,846	1,927	1,855	2,022	2,134	2,022	1,886	2105	2170	2185	2096	2088	2031	2237	2330	2001	2267	2053	2425	2605	2984	3918	4805	4305	3605	3288	2705	2545	2047	2169	1839	1648	1715	1655	1470	1478	1464	1308	1,438	1,380	1,296	1,215	1,562	1,360	1,300	1,019	1,046	949	1,133	1,045	0	105,071								
TOTAL	11,266	12,869	13,762	13,836	13,549	14,008	15,114	14,509	14,747	14,646	13,928	13,039	12,970	14,688	14,765	14,967	14,849	14,157	15,384	17,807	19,213	20,480	22,878	25,709	28,752	25,557	23,731	20,478	18,531	16,224	15,442	14,634	13,600	13,452	12,918	12,883	10,777	10,630	10,488	11,205	11,409	11,145	10,507	9,484	10,533	10,287	9,728	10,011	9,659	9,761	8,868	9,156	1,612	754,665									
Q1	1,206	1,533	1,661	1,440	1,624	1,593	1,863	1,727	1,606	1,539	1,547	1,277	1,396	1,895	1,904	1,521	1,864	1,661	1,569	1,886	1,752	1,883	2,280	2,659	3,080	2,963	2,859	2,529	2,482	1,744	1,959	1,873	1,740	1,648	1,709	1,655	1,209	832	978	1,266	1,237	1,357	1,233	1,030	1,106	1,177	1,208	1,150	1,046	949	1,094	1,045	0	95,902									
Ma	1,527	1,710	1,773	1,808	1,850	1,868	2,022	2,116	2,119	2,104	1,980	1,921	1,888	2,150	2,036	2,044	2,188	2,001	2,267	2,621	2,553	2,711	2,984	3,909	4,239	3,608	3,294	2,848	2,658	2,383	2,199	2,066	1,941	1,970	1,887	1,774	1,522	1,478	1,500	1,540	1,582	1,589	1,495	1,355	1,562	1,486	1,408	1,488	1,446	1,318	1,237	1,277	0	108,411									
Q3	2,266	2,555	2,707	2,817	2,555	2,676	2,604	2,737	2,610	2,820	2,427	2,101	2,248	2,206	2,451	2,547	2,371	2,309	2,574	3,090	4,549	5,209	4,572	4,602	5,134	4,305	4,161	3,413	2,843	2,545	2,500	2,345	2,233	2,148	2,063	2,068	1,972	1,930	1,864	2,059	1,996	1,942	1,774	1,773	1,786	1,821	1,622	1,738	1,582	1,822	1,571	1,942	1,612	108,222									
2020	941																																																					941									

Canal Endémico Estatal de: Edas



FUENTE: SUIVE-1-2005; SUIVE-1-2007

PROCESO DE INFORMACION: DEPARTAMENTO DE EPIDEMIOLOGIA